

Maintenance & Cleaning of Floors and Outside Impervious Surfaces

Clean Business Program



You are responsible for preventing stormwater pollution when cleaning floors and outside impervious surfaces.

Why is Proper Maintenance & Cleaning so Important?

If not done correctly, any outdoor activity at your business can cause pollution. Washing down a walkway can cause pollution, as well as a messy trash area. This may not look like it's polluting our environment, but rain, sprinkler runoff and wind will move that stuff to a storm drain. Once in the storm drain, this untreated pollution goes straight to the environment.

Storm drains are meant for rain water only!

What can I do? Implement Best Management Practices (BMPs).

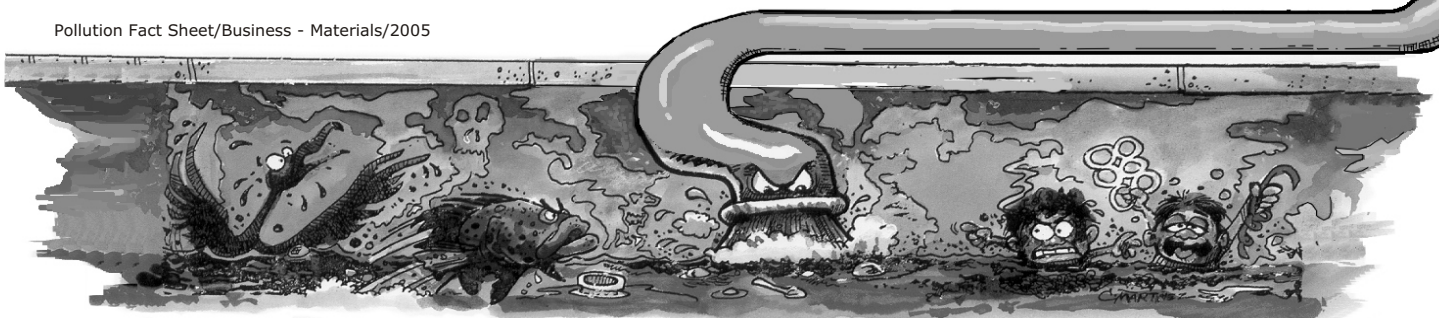
Good housekeeping and proper maintenance will prevent most pollution.

- Keep dumpsters and parking lots free of trash.
- Always keep dumpster lids closed.
- Regularly clean with dry methods (sweep, vacuum or damp mop).
- Work carefully to prevent spills.
- Clean up spills immediately. Use absorbents for liquids, then sweep up and dispose of properly.
- Use drip pans, or better, fix leaking vehicles and equipment.
- Dump all wash water in an indoor drain.
- Never use an outdoor hose to clean anything, unless that water will be captured and dumped into an Indoor drain.
- Label storm drains with "For clean water only" message.

Train all employees to follow these guidelines. It will create a safer workplace and reduce the risk of legal problems/fines. Your success depends on a well-trained staff.

For more information on preventing stormwater pollution visit: www.vcstormwater.org or call _____

Pollution Fact Sheet/Business - Materials/2005



Materials Loading, Unloading and Storage

Clean Business Program



You are responsible for preventing pollution in loading and storage areas. Especially outside where they may be exposed to stormwater.

Why is Loading, Unloading and Storage a Concern?

If not done correctly, any outdoor activity at your business can cause pollution. Loose packing materials at a loading dock or a small spill around a bulk storage area may not look like it's polluting our environment, but rain, sprinkler runoff and wind will move it to a storm drain. Once in the storm drain, this untreated pollution goes straight to the environment.

Storm drains are meant for rain water only!

What can I do? Implement Best Management Practices (BMPs).

Good housekeeping and proper maintenance will prevent most pollution.

- Regularly clean with dry shop methods (sweep, vacuum or damp mop and dump wash water in an indoor drain).
- Work carefully to prevent spills.
- Clean up spills immediately. Use absorbents for liquids, then sweep up and dispose of properly.
- Store liquids in a designated area with secondary containment.
- Use drip pans, or better, fix leaking equipment (fill nozzles, hose connection, etc.)

To prevent your facility from polluting, extra steps may be required to protect materials from rain and wind .

- Cover loading docks and berm loading bays to prevent rainwater from passing through the area.
- Use seals or door skirts between trailers and buildings.
- Point roof downspouts away from material handling areas.
- Label storm drains with "For clean water only" message.

Train all employees to follow these guidelines. It will create a safer workplace and reduce the risk of legal fines/problems. Your success depends on a well trained staff.

For more information on preventing stormwater pollution visit: www.vcstormwater.org or call _____

Pollution Fact Sheet/Business - Materials/2005

