

Carpet Cleaners

Do you know where the water goes?



The “**DON'T DUMP !**” signs are placed next to storm drains to remind everyone that gutters and storm drains carry rain as well as any pollutants directly to arroyos, creeks and the ocean without any treatment.

Disposing of cleaning solutions or soapy water into gutters and storm drains can harm or kill wildlife, *even if it's labeled nontoxic or biodegradable.*

Wastewater from carpet cleaning needs to be treated at a wastewater treatment plant. Indoor drains, like sinks and toilets, drain to the sanitary sewer system which carries wastewater to a treatment plant where pollutants are removed.

Proper Disposal of Wastewater

Plan Ahead - Before starting a job, decide where you are going to dispose of the wastewater and get permission from the resident or local sanitary agency.

Never Discharge into a driveway, street, gutter or storm drain - Dispose of the wastewater in one of the following ways:

- Haul to your facility and dump in an appropriate fixture that drains to the sanitary sewer system.
- Haul to a dump site approved by the wastewater authority.
- With the customers consent, dump to the sanitary sewer through the sinks, toilets, washing machine drain pipes or floor drains at the job site.

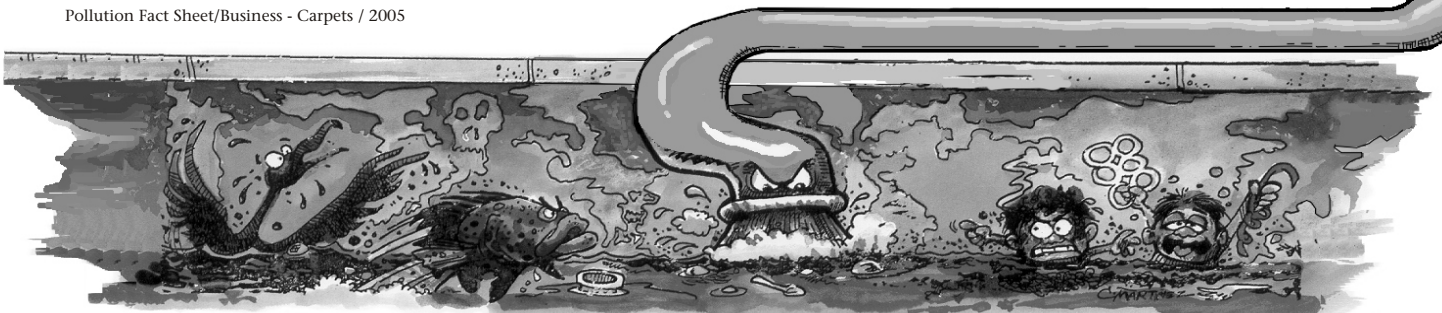
Note: Unless you are using a disposal site with a grit trap, always strain the debris from the carpet cleaning wastewater. Debris can clog drains. Debris collected can be disposed of as trash.

Other Ways to Protect the Environment

- Prepare for and clean up spills. Capture spills with absorbent materials such as kitty litter or sawdust, and dispose of them properly. Never use a hose to wash a spill away.
- Fix vehicle leaks. Automotive fluids are hazardous wastes and if they leak onto the street it will only take a light rain to rinse them down the storm drains.

For more information on preventing stormwater pollution visit: www.vcstormwater.org or call _____

Pollution Fact Sheet/Business - Carpets / 2005



Cleaning Your Carpets

Do you know where the water goes?



The **“DON’T DUMP !”** signs are placed next to storm drains to remind everyone that gutters and storm drains carry rain as well as any pollutants directly to arroyos, creeks and the ocean without any treatment.

Disposing of cleaning solutions or soapy water into gutters and storm drains can harm or kill wildlife and create foul odors in your neighborhood, *even if it’s labeled nontoxic or biodegradable.*

Wastewater from carpet cleaning needs to be treated at a wastewater treatment plant. Indoor drains, like sinks and toilets, drain to the sanitary sewer system which carries wastewater to a treatment plant where pollutants are removed.

Proper Disposal of Wastewater

Carpet cleaning wastewater should be disposed of in one of the following ways:

- If it is acceptable to you, a sink, toilet, washing machine drain pipe or floor drain in your home may be used to dispose of wastewater. A strainer is needed to prevent debris from clogging your drains. Debris collected from wastewater cleaning can be disposed of in the trash.
- If you don’t have a drain that can be used, all wastewater should be hauled away and disposed of properly.

Before selecting a professional carpet cleaner, find out how they plan to dispose of the wastewater. If they plan to use the street, gutter or storm drain for disposal because, *“we’ve always done it that way”* or *“our chemicals are nontoxic”*, don’t give them your business. A reputable business will have a proper plan for handling the waste they create.

For more information on preventing stormwater pollution visit: www.vcstormwater.org or call _____

Pollution Fact Sheet/General Public - Carpets / 2005

