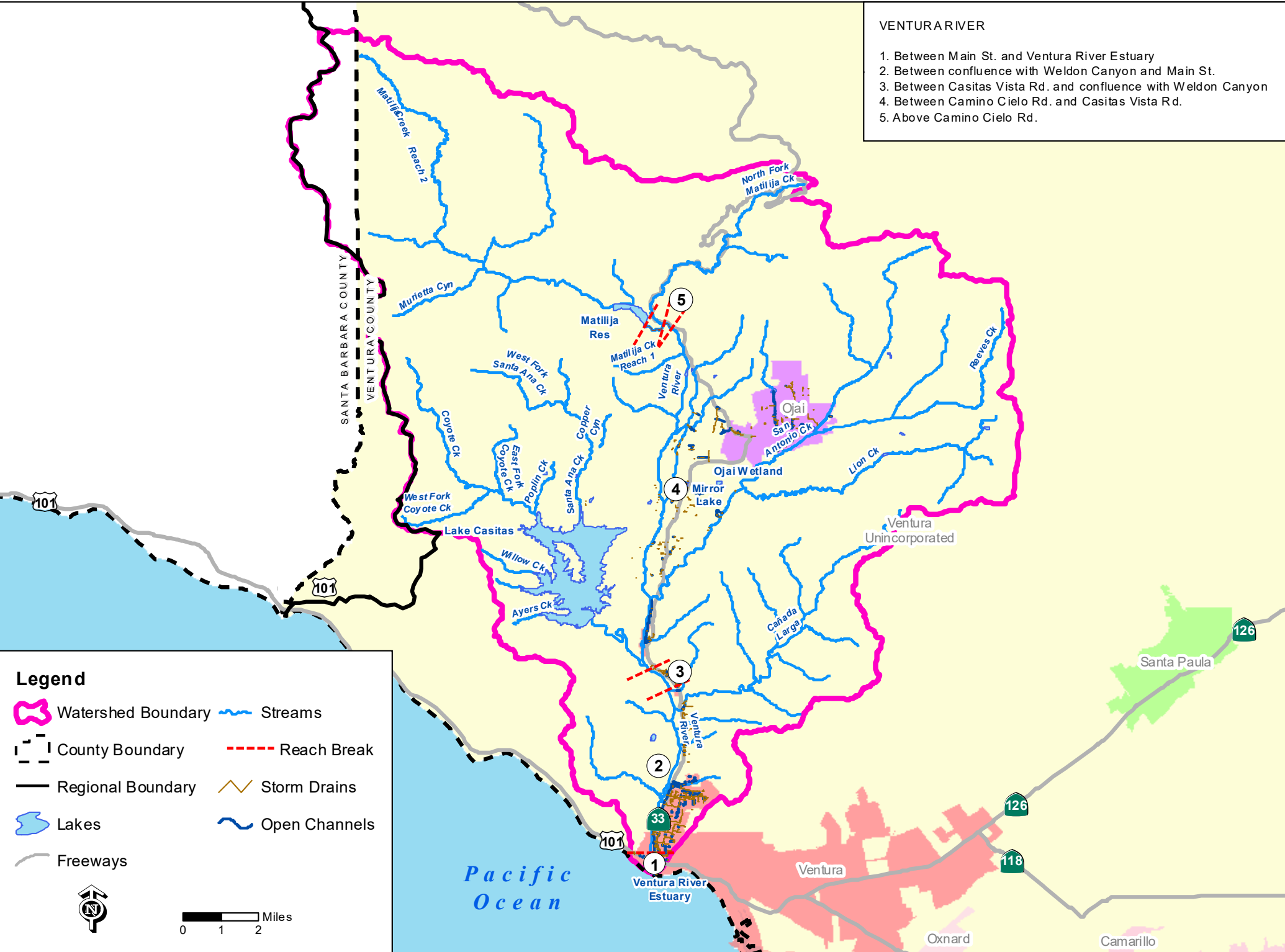


**ATTACHMENT C – LOS ANGELES REGION STORM DRAIN SYSTEM AND VENTURA COUNTY  
MONITORING LOCATION MAPS**



VENTURARIVER

1. Between Main St. and Ventura River Estuary
2. Between confluence with Weldon Canyon and Main St.
3. Between Casitas Vista Rd. and confluence with Weldon Canyon
4. Between Camino Cielo Rd. and Casitas Vista Rd.
5. Above Camino Cielo Rd.

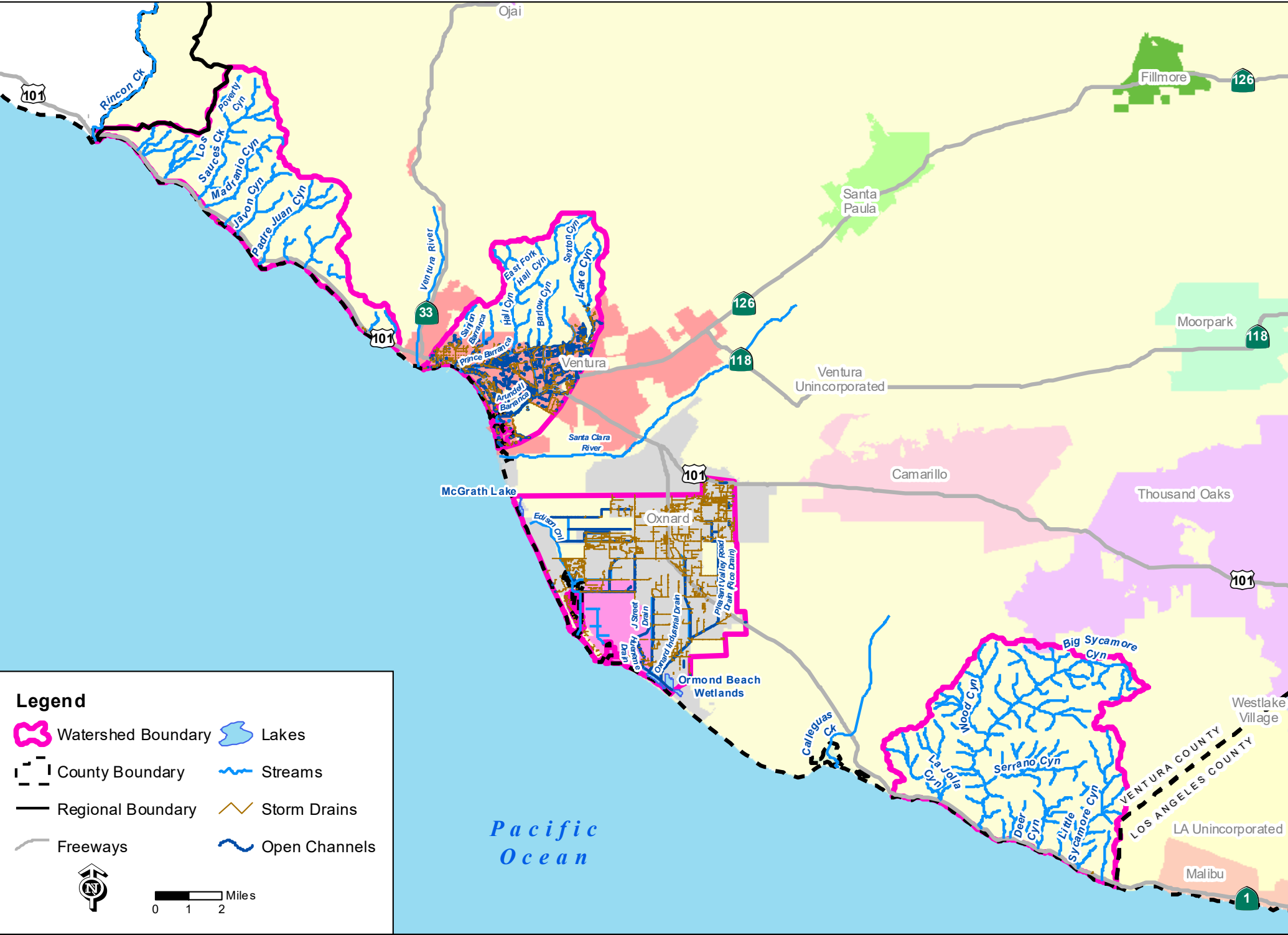


**Legend**

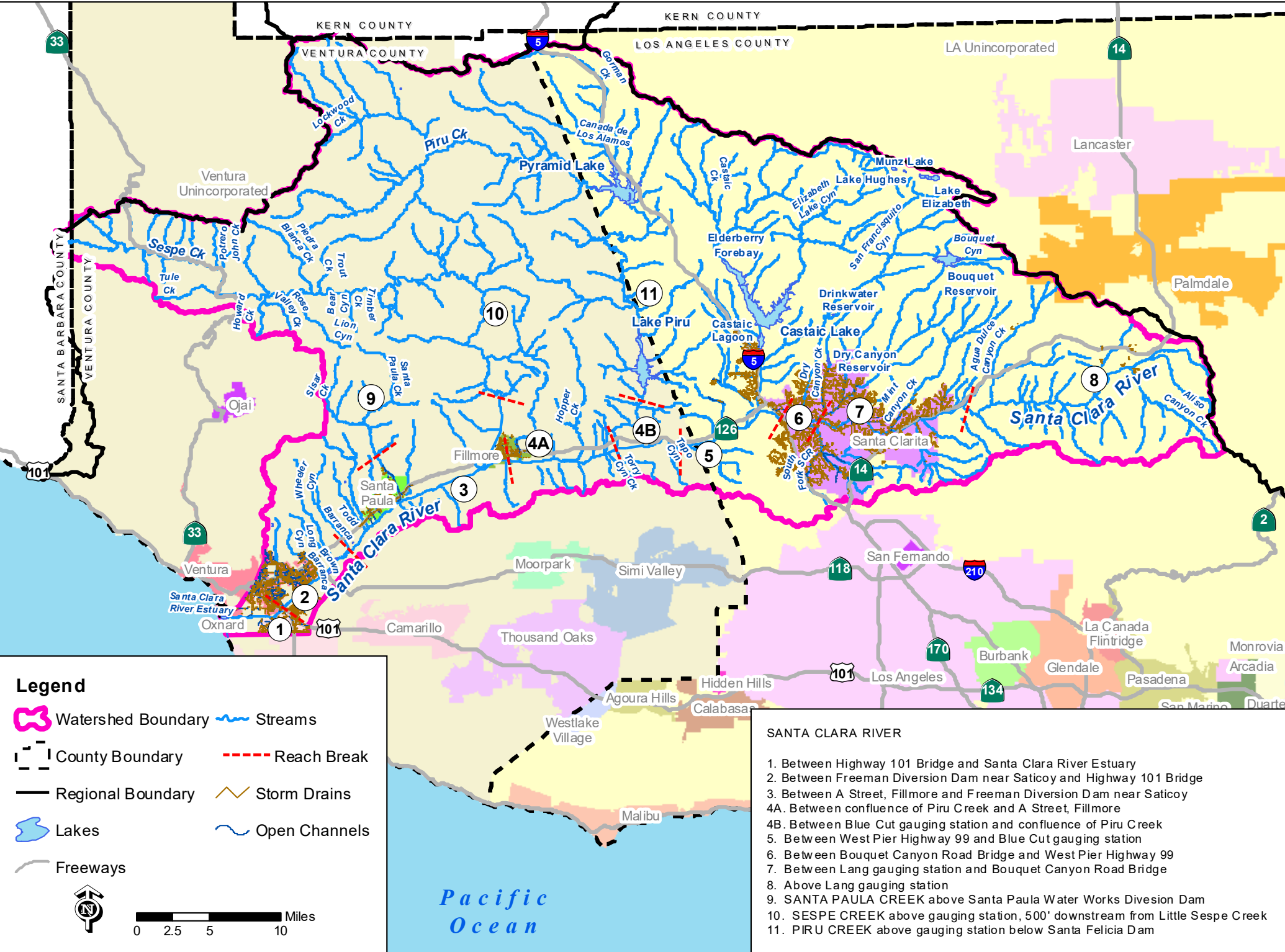
Watershed Boundary	Streams
County Boundary	Reach Break
Regional Boundary	Storm Drains
Lakes	Open Channels
Freeways	

Miles  
0 1 2

Figure C-2: Ventura River Watershed Management Area Storm Drain System.



**Figure C-3: Miscellaneous Ventura County Coastal Watersheds Management Area Storm Drain System.**



**Legend**

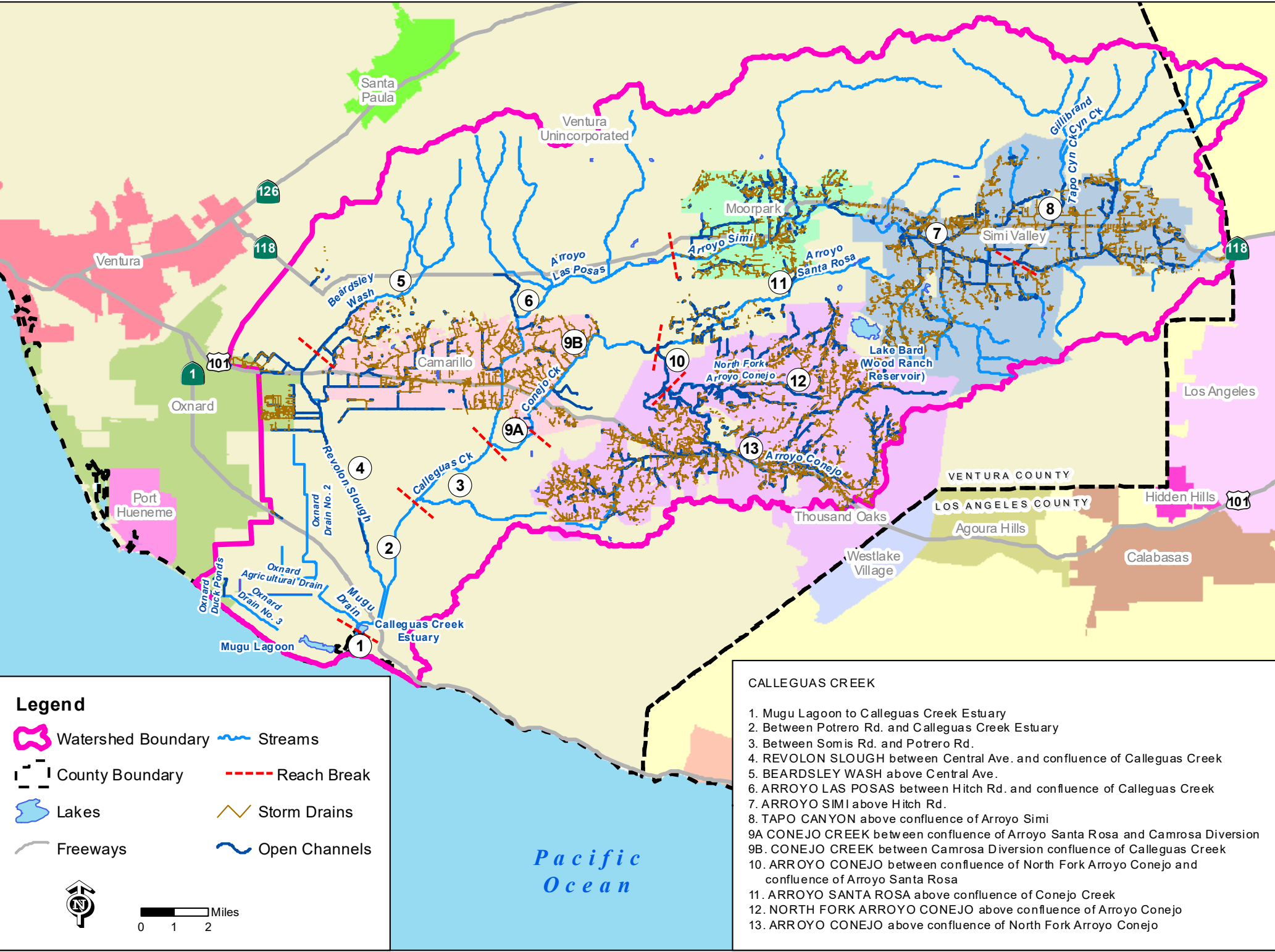
- Watershed Boundary
- Streams
- County Boundary
- Reach Break
- Regional Boundary
- Storm Drains
- Lakes
- Open Channels
- Freeways

Miles  
0 2.5 5 10

- SANTA CLARA RIVER**
1. Between Highway 101 Bridge and Santa Clara River Estuary
  2. Between Freeman Diversion Dam near Saticoy and Highway 101 Bridge
  3. Between A Street, Fillmore and Freeman Diversion Dam near Saticoy
  - 4A. Between confluence of Piru Creek and A Street, Fillmore
  - 4B. Between Blue Cut gauging station and confluence of Piru Creek
  5. Between West Pier Highway 99 and Blue Cut gauging station
  6. Between Bouquet Canyon Road Bridge and West Pier Highway 99
  7. Between Lang gauging station and Bouquet Canyon Road Bridge
  8. Above Lang gauging station
  9. SANTA PAULA CREEK above Santa Paula Water Works Diversion Dam
  10. SESPE CREEK above gauging station, 500' downstream from Little Sespe Creek
  11. PIRU CREEK above gauging station below Santa Felicia Dam

**Figure C-4: Santa Clara River Watershed Management Area Storm Drain System.**





**Legend**

- Watershed Boundary
- Streams
- County Boundary
- Reach Break
- Lakes
- Storm Drains
- Freeways
- Open Channels



0 1 2 Miles

**CALLEGUAS CREEK**

1. Mugu Lagoon to Calleguas Creek Estuary
2. Between Potrero Rd. and Calleguas Creek Estuary
3. Between Somis Rd. and Potrero Rd.
4. REVOLON SLOUGH between Central Ave. and confluence of Calleguas Creek
5. BEARDSLEY WASH above Central Ave.
6. ARROYO LAS POSAS between Hitch Rd. and confluence of Calleguas Creek
7. ARROYO SIMI above Hitch Rd.
8. TAPO CANYON above confluence of Arroyo Simi
- 9A CONEJO CREEK between confluence of Arroyo Santa Rosa and Camrosa Diversion
- 9B. CONEJO CREEK between Camrosa Diversion confluence of Calleguas Creek
10. ARROYO CONEJO between confluence of North Fork Arroyo Conejo and confluence of Arroyo Santa Rosa
11. ARROYO SANTA ROSA above confluence of Conejo Creek
12. NORTH FORK ARROYO CONEJO above confluence of Arroyo Conejo
13. ARROYO CONEJO above confluence of North Fork Arroyo Conejo

**Figure C-5: Calleguas Creek Watershed Management Area Storm Drain System.**



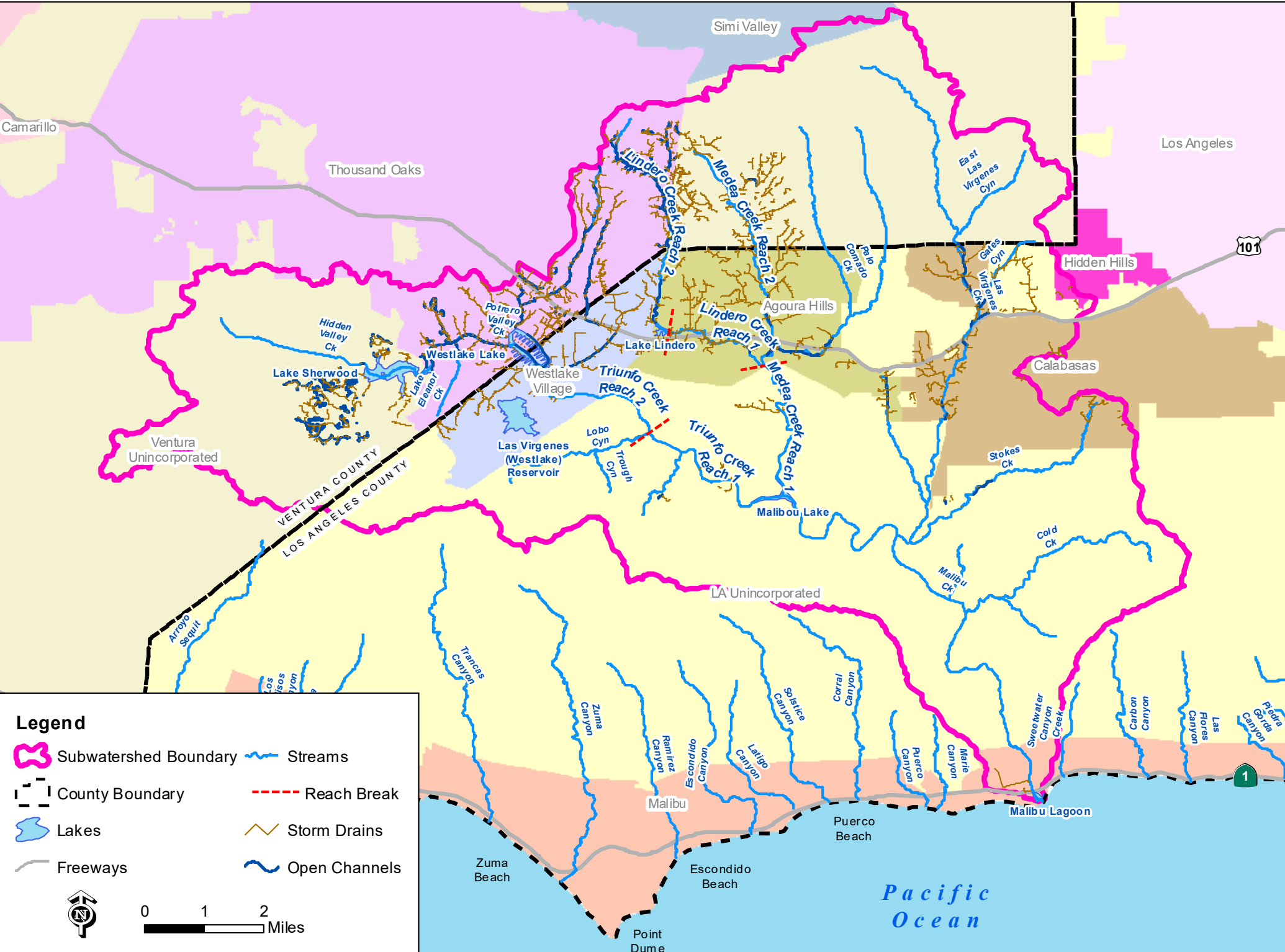
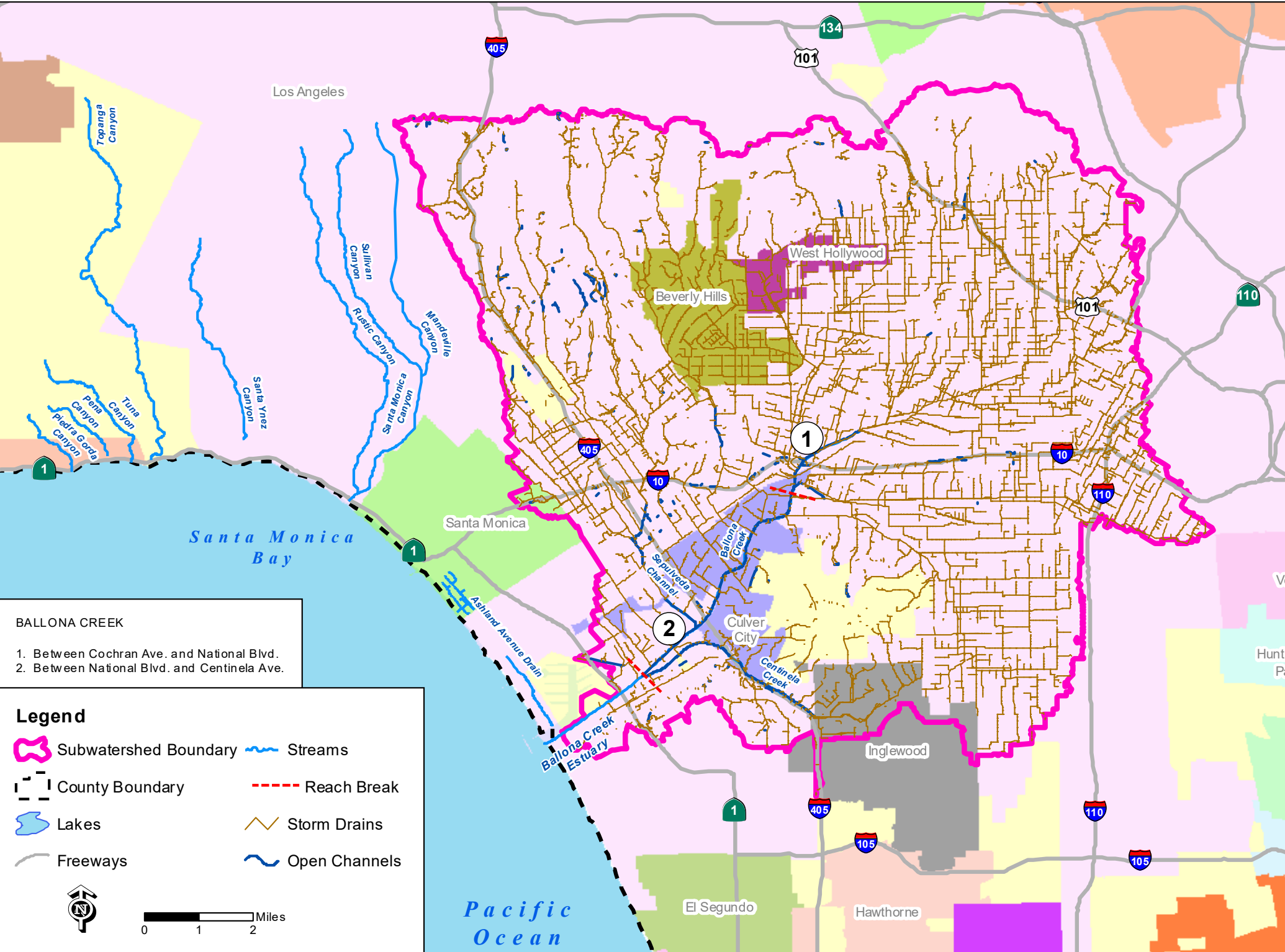


Figure C-6a: Malibu Creek Subwatershed Storm Drain System (Santa Monica Bay WMA).

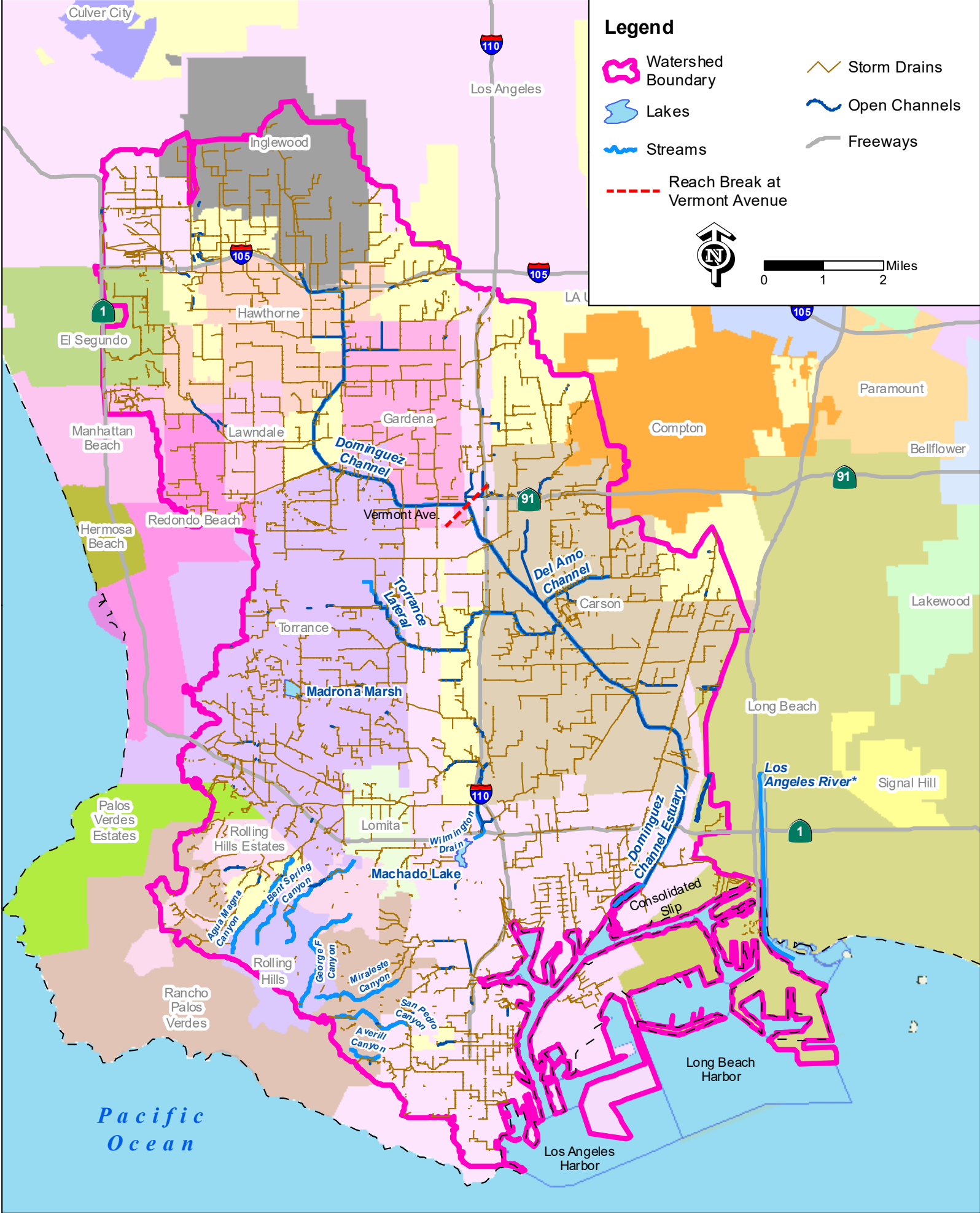




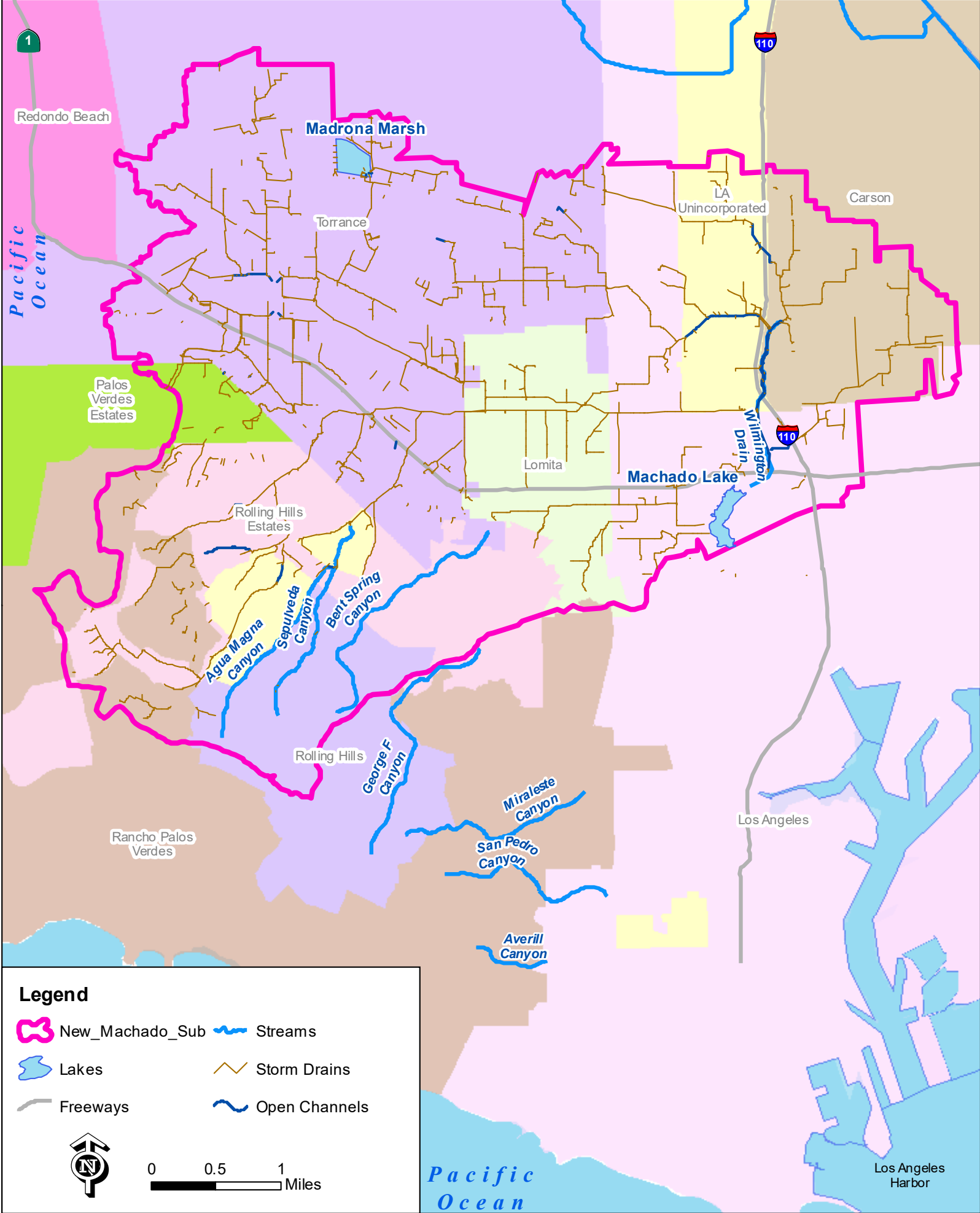
**Figure C-6b: Marina del Rey Subwatershed Storm Drain System (Santa Monica Bay WMA).**



**Figure C-6c: Ballona Creek Subwatershed Storm Drain System (Santa Monica Bay WMA).**



**Figure C-7: Dominguez Channel and Los Angeles/Long Beach Harbors Watershed Management Area Storm Drain System.**

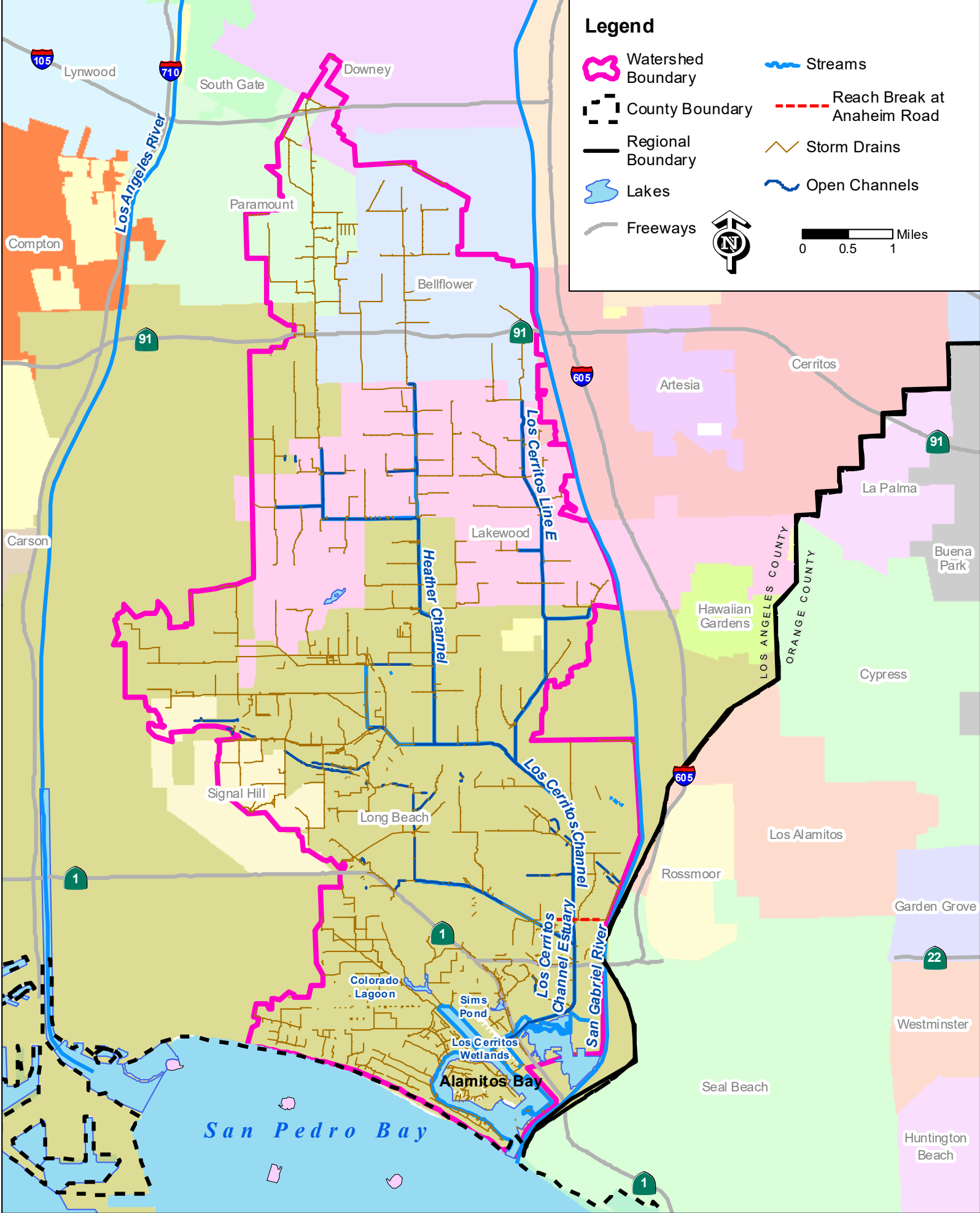


**Figure C-7a: Machado Lake Subwatershed Storm Drain System (Dominguez Channel & LA/LB Harbors WMA).**









**Figure C-10: Los Cerritos Channel and Alamitos Bay Watershed Management Area Storm Drain System.**





**Figure C-11: Ventura County Storm Drain System and Monitoring Locations.**



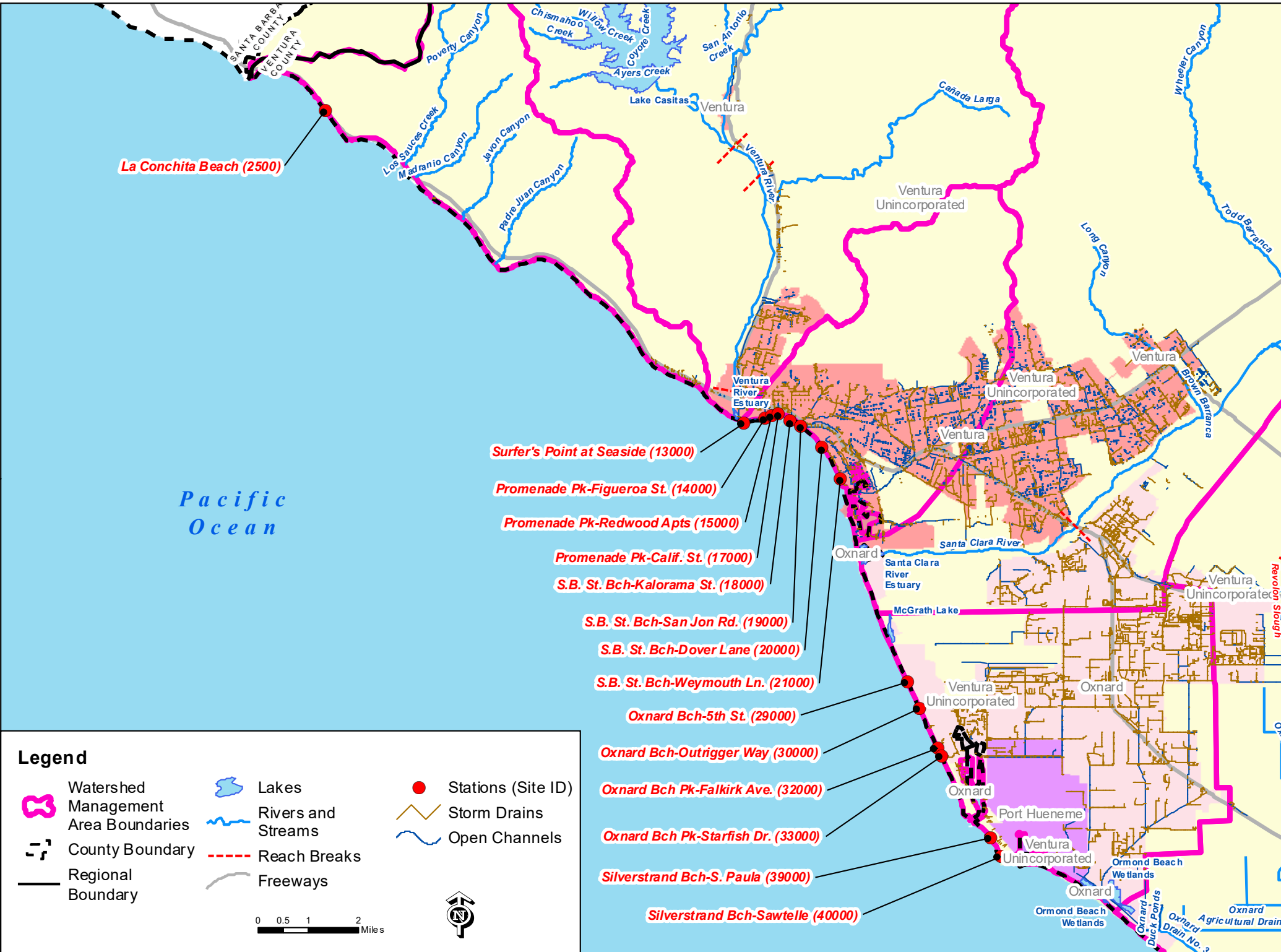


Figure C-12: Ventura County Shoreline Monitoring Locations.