

Table A-2. Spring 2004 BMI metrics by replicate for each of the three sample locations in the Ventura Watershed.

Station Replicate	Ventura River Main Street Bridge 0			Ventura River Foster Park 4			Ventura River below Matilija Dam 12			San Antonio Creek above Lion Canyon 15			Stewart Canyon Creek u/s conf. San Antonio Creek 8			San Antonio Creek near Stewart Canyon Creek 9			North Fork Matilija Creek u/s conf. Ventura River 10			North Fork Matilija Creek at gauging station 11			Matilija Creek below community 13			
	1	2	3	1	2	3	1	2	3	1	2	3	1	2	3	1	2	3	1	2	3	1	2	3	1	2	3	
Taxonomic richness	18	22	21	31	24	27	17	21	18	28	30	30	26	29	24	28	28	24	26	25	36	36	34	30	24	20	19	
% dominant taxa	44.8	29.7	26.7	18.3	14.7	15.7	31.0	28.2	37.3	16.2	13.5	14.2	17.9	16.5	17.6	23.5	23.6	57.2	18.5	22.4	20.9	45.8	20.6	37.7	32.6	33.5	27.6	
Cumulative taxa		32			48			34			56			48			49			55			57			36		
EPT taxa	5	6	5	11	7	12	6	6	4	9	8	10	10	9	7	9	9	9	9	5	13	12	15	9	8	6	7	
EPT Index (%)	73.2	50.3	43.5	61.0	36.5	63.1	37.6	28.2	55.6	32.8	27.6	41.7	51.7	38.5	33.2	63.5	65.7	65.8	47.5	23.7	26.3	64.2	39.5	17.3	17.6	22.8	18.8	
Sensitive EPT Index (%)	0.0	0.0	0.0	8.3	8.2	3.1	1.3	0.7	0.0	2.4	5.5	14.2	32.1	26.4	14.6	23.1	29.2	2.9	6.9	4.9	5.6	49.4	23.0	6.0	3.6	0.4	0.7	
Percent Chironomidae	12.1	20.3	37.0	15.7	22.9	12.3	2.3	12.5	9.9	13.1	8.5	10.1	5.0	7.5	16.6	3.9	2.5	17.9	18.5	17.9	7.4	7.5	29.1	46.9	10.0	20.5	22.0	
Shannon Diversity	1.83	2.11	2.26	2.75	2.69	2.75	1.91	2.34	2.07	2.82	2.91	2.85	2.55	2.74	2.63	2.54	2.50	1.68	2.69	2.54	2.79	2.38	2.77	2.33	2.21	2.05	2.00	
Tolerance Value	4.9	5.3	5.2	4.8	5.5	4.8	5.1	5.2	5.1	5.6	5.4	5.5	4.8	5.1	5.2	4.5	4.0	4.4	4.7	5.0	5.0	3.2	4.2	4.8	5.0	4.8	5.1	
Percent Intolerance Value (0-2)	0.0	0.0	0.0	7.3	8.2	3.1	0.3	0.3	0.3	2.4	5.6	2.1	31.1	27.6	10.8	22.5	29.6	2.9	6.6	4.9	4.4	49.1	20.1	9.1	3.9	0.4	0.7	
Percent Tolerance Value (8-10)	3.6	3.7	2.7	8.0	20.1	7.2	8.2	4.9	5.9	23.0	20.5	28.5	31.5	26.1	15.6	17.6	9.1	0.6	1.7	8.8	8.6	10.8	6.7	5.0	8.2	3.2	3.0	
Percent Collectors	94.8	93.5	90.1	82.0	85.7	79.9	49.7	41.4	67.8	68.4	57.4	86.6	85.1	85.1	77.6	35.2	56.6	84.0	92.2	87.8	90.7	91.0	92.8	94.7	87.7	78.7	76.0	
Percent Filterers	24.5	30.0	18.2	20.0	9.2	19.8	32.7	30.3	24.2	13.4	14.9	19.8	14.2	12.4	38.3	24.1	27.4	60.4	22.8	12.7	26.8	6.9	13.7	11.6	25.4	25.2	29.9	
Percent Grazers	2.0	1.7	1.0	4.7	1.0	10.6	2.6	5.2	6.8	0.7	5.8	5.2	35.4	32.0	14.6	22.8	31.1	1.9	9.9	5.2	13.6	56.0	29.9	9.4	1.8	1.1	0.7	
Percent Predators	3.3	2.7	8.6	13.3	8.9	9.6	5.2	4.5	2.5	10.3	12.3	18.4	13.6	24.5	17.6	8.8	8.8	11.2	4.3	4.9	7.4	6.6	9.0	5.7	5.7	2.9	3.9	
Percent Shredders	0.0	0.3	0.3	0.0	0.0	0.0	0.0	0.0	0.0	1.4	0.6	0.0	1.3	0.0	0.0	0.0	0.3	0.3	0.7	0.6	1.5	2.1	1.5	0.9	1.4	0.0	0.7	
Percent Hydropsychidae	20.6	8.3	13.0	19.3	7.2	15.7	0.7	1.7	8.4	6.2	7.6	19.8	10.9	9.0	18.0	23.5	23.6	57.2	18.5	11.4	8.8	5.4	10.2	4.1	2.2	8.6	2.3	
Percent Baetidae	47.7	36.7	28.8	12.7	8.5	18.8	35.3	22.0	42.9	18.6	13.7	5.2	0.7	0.0	0.0	3.3	3.8	1.6	11.6	3.2	6.5	3.9	5.2	3.1	10.8	12.9	15.1	
Predator Taxa	3	4	6	9	7	5	3	4	5	10	6	10	6	10	6	5	7	9	7	6	10	8	9	9	5	5	6	
Coleoptera Taxa	2	2	2	2	1	3	1	1	1	3	4	4	0	2	0	4	2	2	2	2	2	3	6	5	2	1	2	1
Percent Non-Insect	6.9	3.7	5.8	14.0	18.4	9.6	9.2	9.4	5.9	17.1	20.9	27.4	30.8	27.6	16.6	8.5	6.6	5.8	1.3	9.7	10.0	6.0	6.4	2.2	4.3	1.4	1.0	

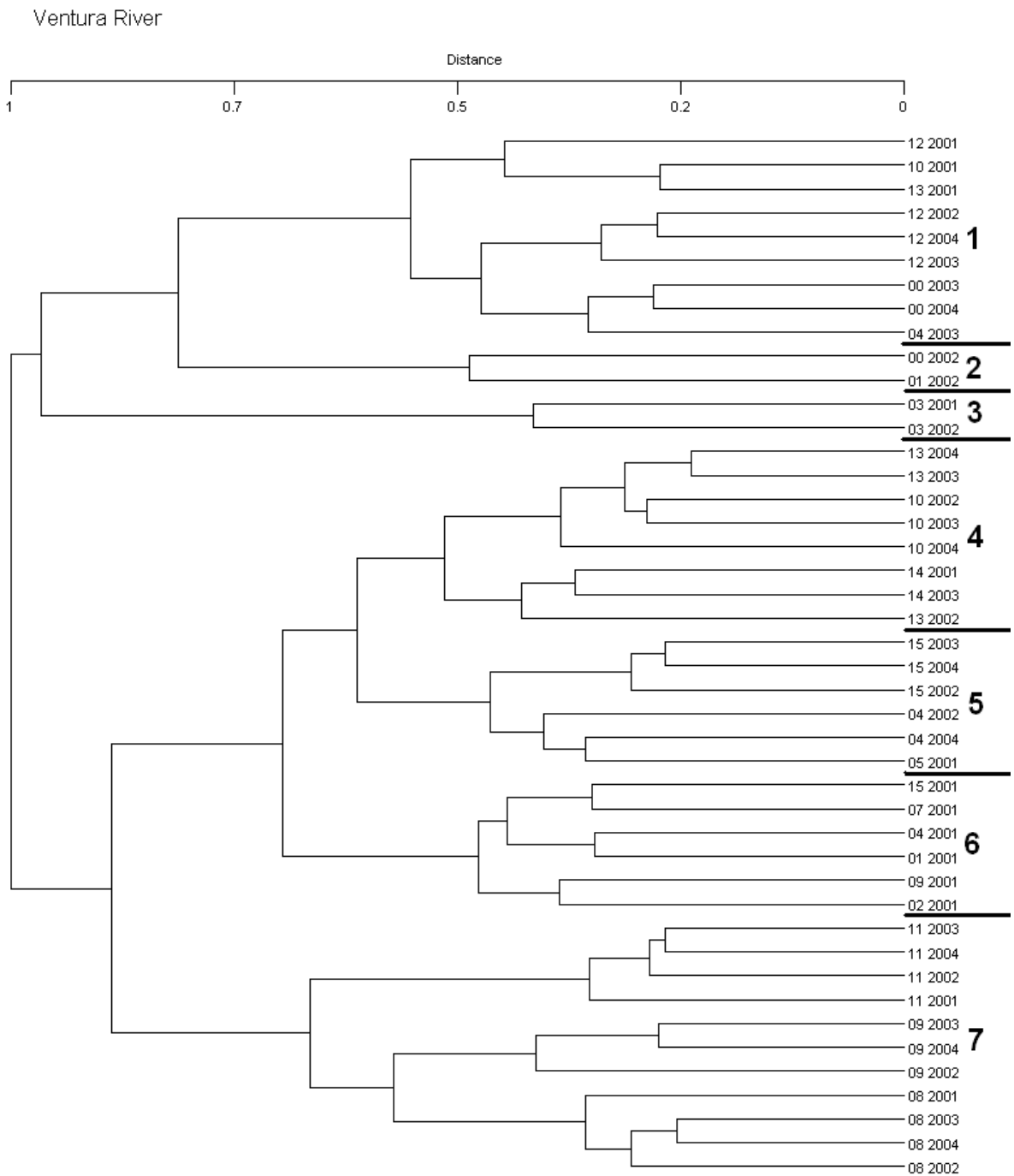


Figure A-1. Station dendrogram for historic Ventura watershed BMI data (2001-2004) based on Bray-Curtis dissimilarity. Station groups are listed on right.

